

PAPER MINT

by MERCADIER[®]édition

TECHNICAL SHEET

Update 07/04/2018

“ACCROCHE”

PRODUCT DESCRIPTION

“Accroche” Primary in aqueous phase for most supports.

Use also as primary insulation for wood.

- Inside and Outside
- Strong adhesion
- Use very easy
- Isolate seepage from wood
- Early water resistance
- Available in 4 hues (white grey, pink, yellow) according to the finish color

APPLICATION DOMAIN

- Wood / Wood panel
- Smooth surface : PVC, glass, pane, etc.
- Metals nonferrous

PREPARATION OF THE SURFACE

Do not neglect the preparation of the surface. This is an essential stage for a perfect realization of your finishing paint and to ensure its longevity.

Remove all dirt, including limestone, from the affect surface with a suitable cleaning product. Then, rinse and let dry. Remove all traces of grease and oil with a water-based degreaser. Rinse all surfaces

Supports must be prepared in accordance with DTU 59.1. to which must be added the next specific preparation: funds must be sound, dry, consistent and specific to the application.

WOOD

Sand the wood et completely clean the surface. Holes and imperfections can be sealed with wood filler.

SMOOTH SURFACE AND METALS NONFERROUS

Sand the surface with a fine grain. Eliminate all traces of grease by cleaning, dust and other dirt before applying a coat of the “Accroche”.

MOULD

Eliminate mold with a water-based bleach solution (1/3). Rub the affected areas with this solution.

Let it take for 10 minutes. Rinse, then, the surface with water. Then, let it dry completely before beginning to paint. Do not add detergent or ammonia to the solution.

OLD PAINT

Scrub and brush in such a way as to eliminate non-adherent parts of the support.

Other support : contact us

IMPLEMENTATION

Follow the recommendations concerning the preparation of the surface before painting. Apply the "Accroche" in one coat with a brush, roller or paint sprayer. Do not dilute the paint. Do not paint in direct exposure to the sun. Use the paint at temperatures included between 6 °C and 34 °C.

Theoretical yield: 10 to 12 m²/l

Drying time: Out of dust: 1 to 4 hours

Hardening after 3 days

For use with the Airless:

Airless pressure: 100 - 130 bar

Tip: 0,028" - 0,038"

Angle: 25° - 40°

Our advice:

Select "L'Accroche Mercadier" adapted according to the chosen finish hue:

- Grey: Granite indigo, Musa vert, Jungle bleu canard, Jungle bleu canard indigo, 1925 gris anthracite, 1925 gris anthracite intense, Bleu PaperMint, Farsi, Malossol, Mazarin, Opium, Prince, Rigoletto, Velvet.

- Yellow: Alice, Nachos, Romanesco, Star fruit, Toffee, Tatin, Berthe, Rio Dulce.

- Pink: Bravo !, Calypso, Cocorico, Geronimo, Karma, Kir, Pitaya, Tangerine, Tsar, Bourke.

- White: Waves gris perle, Waves gris souris, Granite céladon, Granite rose saumon, Musa rose, Tiles ivoire, Tiles bleu pétrole, Daisy vert, Jungle vert d'eau, Jungle sable, Jungle blanc craie, 1925 beige, Blanc papier, other hues.

CLEANING

Rinse hands immediately and rinse tools with water and soap after use.

CHARACTERISTICS

Basic data for a white paint at 20 °C

Density: 1,35 g/cm³

Extract dry weight: +/- 53 % of the mass

Extract dry volumetric : % vol.

Recommended thickness dry film: micrometers

Recommended thickness humid film: micrometers

Storage: Keep in a fresh place and its original packaging: min. 12 months

CONDITION OF APPLICATION

Temperatures: > 3°C, < 40 °C (air, surface and material)

Relative humidity: 85 % maximum

HEALTH AND SAFETY

Do not leave within the reach of children.

Volatile Organic Compounds (VOC):

- **VOC content:** This paint contains little VOC.

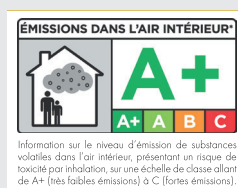
Exposure limit value according to Directive 2010/79/EU: Class A: 30g/L

This product contains max 30 g/L

- **VOC emissions:** In accordance with the new French regulation which imposes limit values of the rate of VOC (Volatile Organic Compounds), present in the products of construction this product Mercadier respects the environment. This regulation

imposes that the construction and decoration products must be provided with a label indicating in a simple and readable, their emission level of volatile pollutants (VOC). We have the pleasure to confirm that this product is A +.

Product in aqueous phase not subject to labelling.



Safety data: contact us.

The information contained in this document is indicative and may not be provide a description appropriate to the nature and condition of the funds to be processed.

• Le showroom PaperMint •

36, Rue Paul Séward 75009 Paris · France ·

+33 9 87 01 56 95

commande@paper-mint.fr – paper-mint.fr

Instagram : @papermint_paris – Facebook : /papermintparis